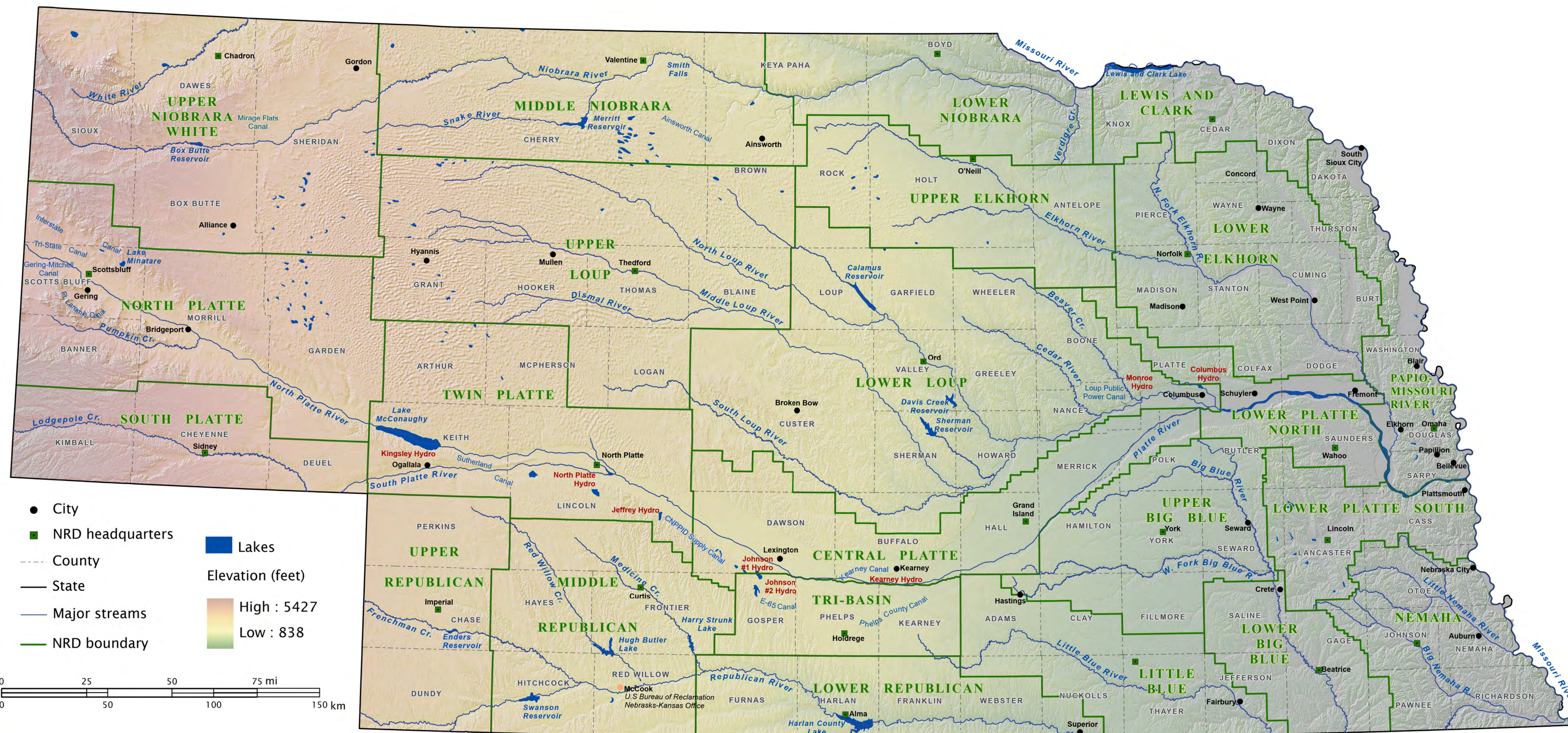
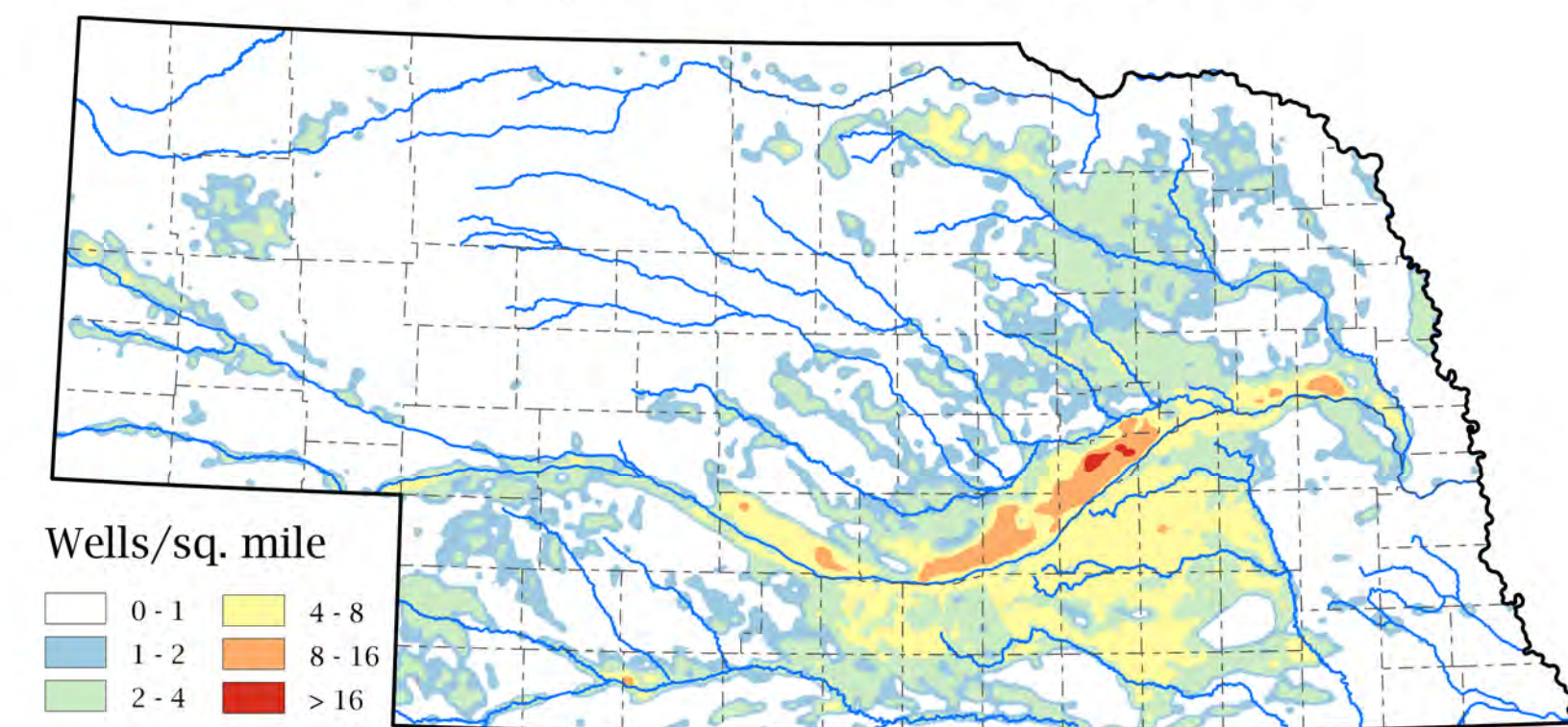


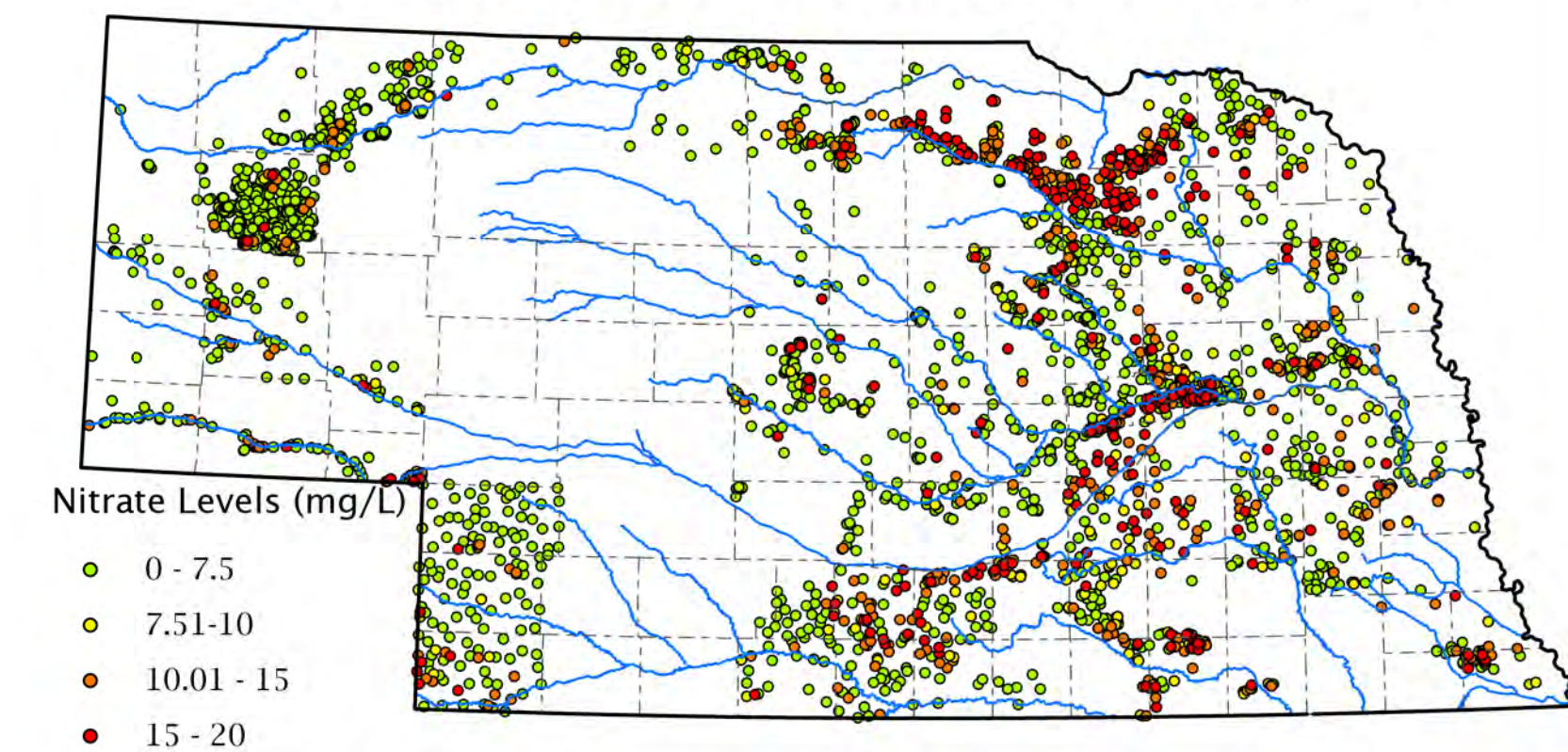
NEBRASKA'S WATER



Density of Irrigation Wells, 2022

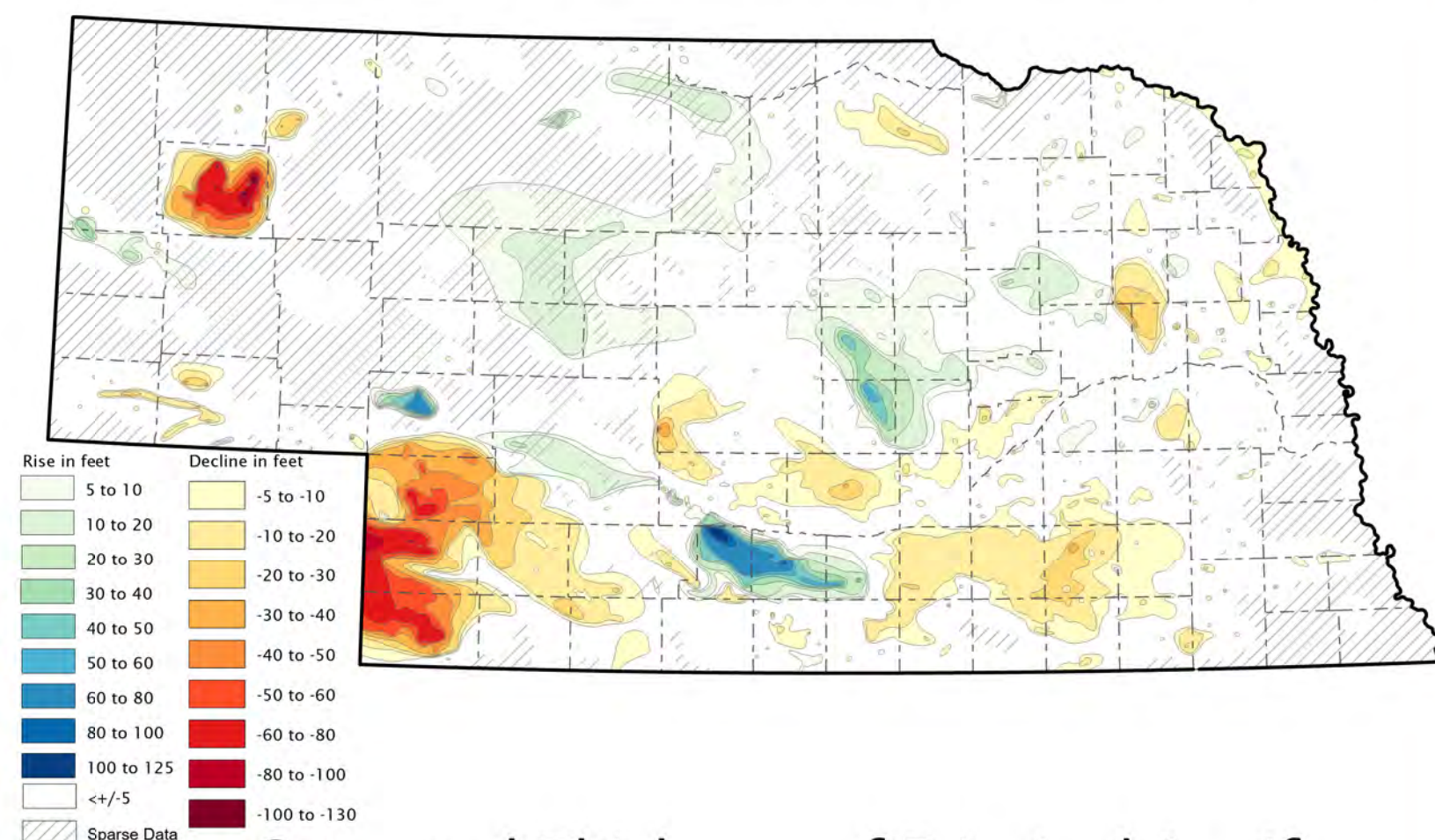


Nitrate Concentration in Groundwater, 2019

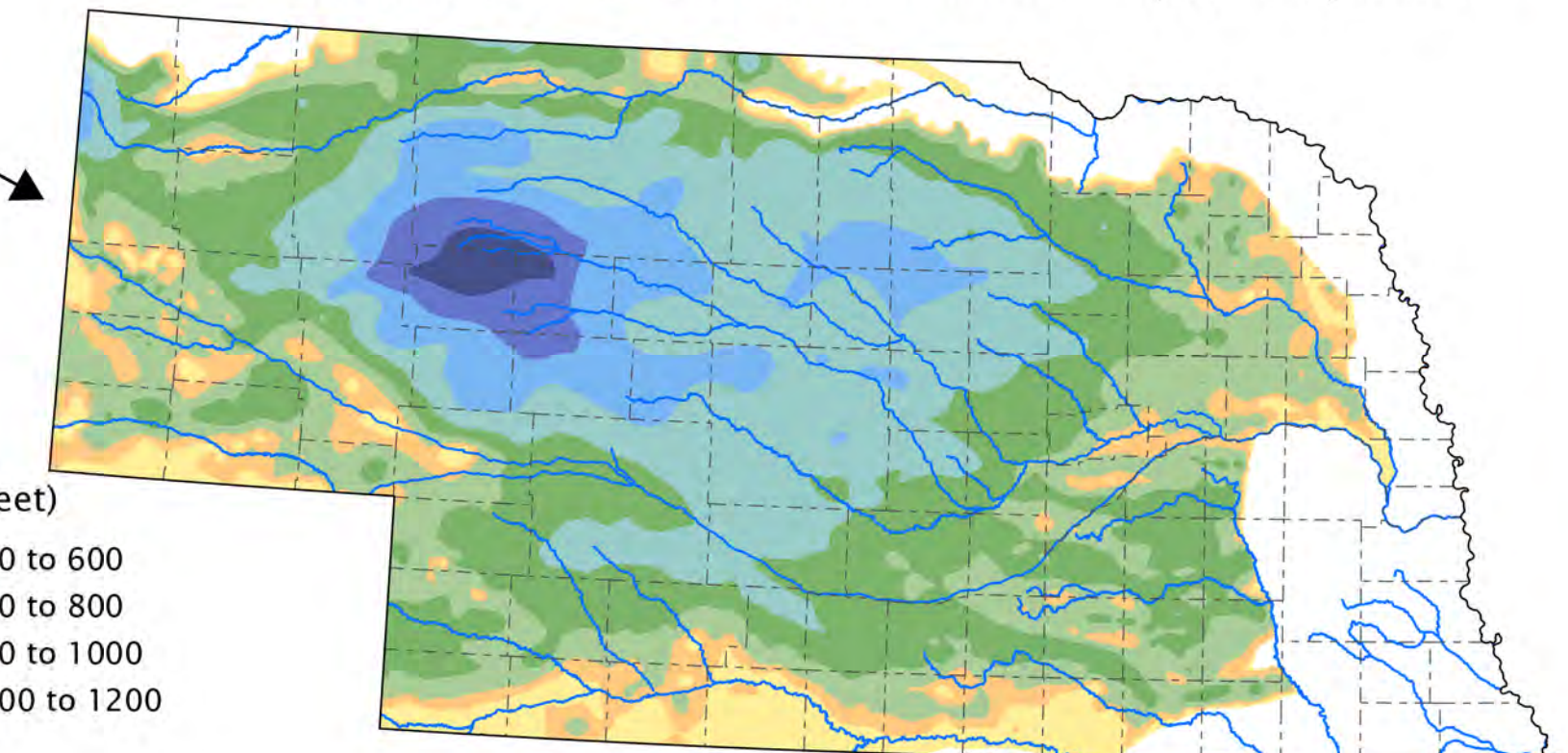


Source: Nebraska groundwater quality monitoring report (NDEE, 2020)

Groundwater Level Changes, Pre-pumping to 1960



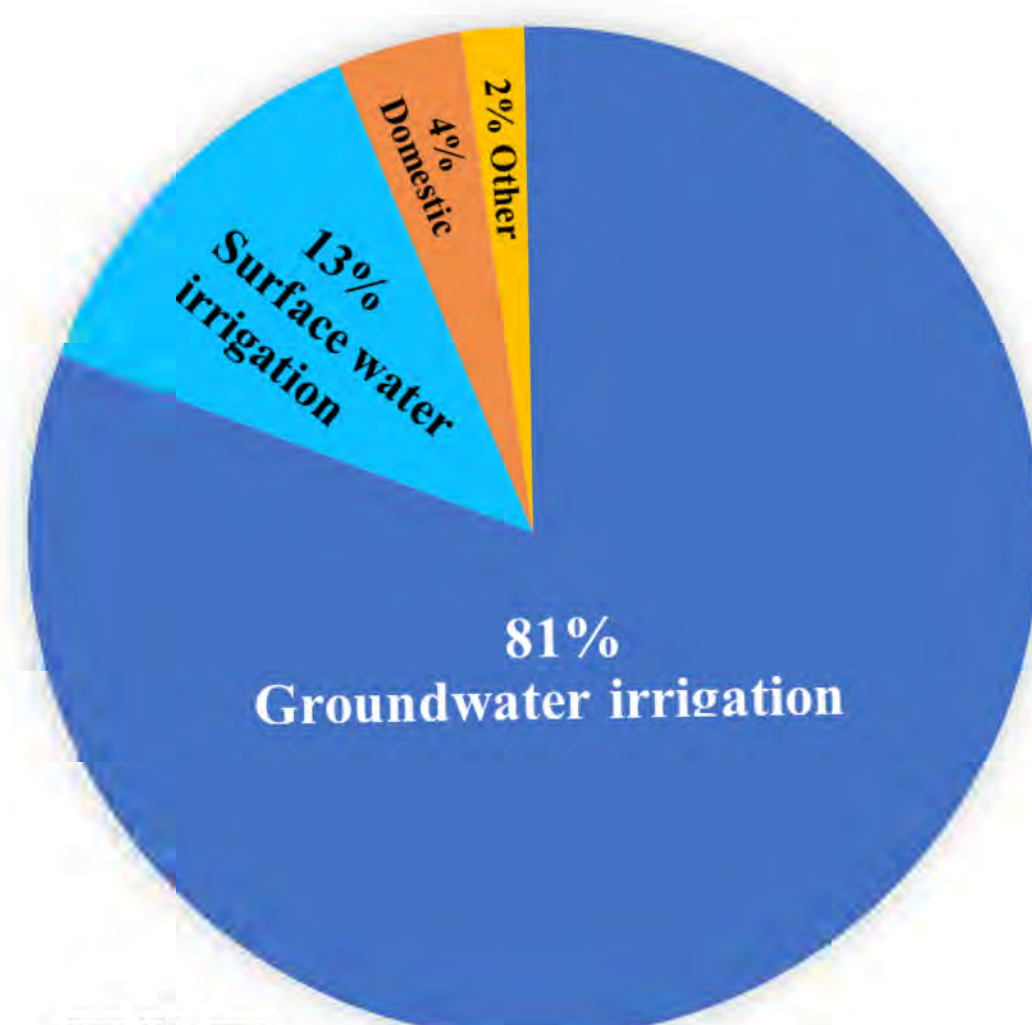
Saturated Thickness of Principal Aquifer



Nebraska Water Facts:

- ✓ **> 95,000 active irrigation wells**
- ✓ **~70% of the total volume of the High Plains aquifer**
- ✓ **>1,000 feet of maximum saturated thickness in the High Plains aquifer**
- ✓ **~81,000 miles of streams and > 2,500 natural lakes**
- ✓ **~85% Nebraskans rely on groundwater**

Estimated Water Use in Nebraska 2021 (Farm Progress, 2021)



 csd.unl.edu

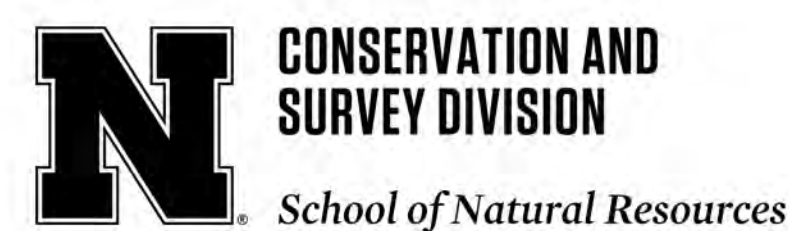
Saturated Thickness of High Plains Aquifer



Data source: McGuire et al., 2012. U.S. Geological Survey Scientific Investigations Report 5177.

Sources: Conservation and Survey Division, School of Natural Resources, University of Nebraska-Lincoln; U.S. Geological Survey, Nebraska Water Science Center; U.S. Bureau of Reclamation, Kansas-Nebraska Area Office; Nebraska Natural Resources Districts; Central Nebraska Public Power and Irrigation District; Nebraska Department of Environment and Energy

Cite this poster as: Shrestha, N., Briggs, A., Young, A.R., and Joekel, R.M., 2023. Conservation and Survey Division Water Survey Map 159. Conservation and Survey Division, School of Natural Resources, University of Nebraska-Lincoln.



Disclaimer: The information presented in these maps depicts representation at multiple scale and is intended to provide general overview of regional variation.